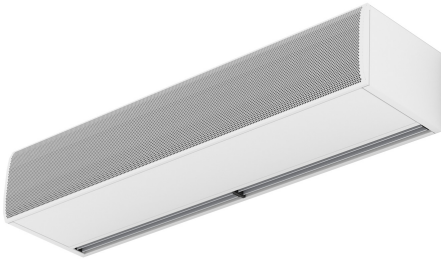


## Karakteristika



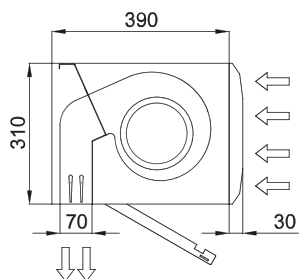
- "Specielt designet for insektkontrol i indgange såsom ved fødevarevirksomheder og industri, hospitaler eller sterile områder. Høj hastighed luft barrierer til at undgå flyvende insekter fra at slippe ind i en bygning. Op til 2,3 meter høje døre i henhold til NSF 37 standarden."
- Selvbærende beklædningskonstruktion lavet af galvaniseret stålplader, afsluttet i strukturel hvid epoxy-polyester maling RAL9016 som standard. Andre farver og rustfrit stål er tilgængelige ved anmodning.
- Stor facetteret indtaglameller uden brug for intensiv vedligeholdelse.
- Anodiseret aluminium udtagslameller, airfoil formet, justerbar fra 0 til 15° i vilkårlig retning.
- EC Double-inlet centrifugal fans driven by an external rotor motor and low noise level, with very low consumption efficiency fans.
- "A" type uden varme, kun luft.
- Advanced Plug&Play control. Includes: Advanced PRO control with LCD display and integrated thermostat, door contact, 7m and remote control. With integrated functions: door delay (configurable); interface mode; operation, alarm and maintenance warning signals; and multiple digital inputs that modify the air curtain's operation.
- Includes protective varnish for the electronic board and control.
- Optional:
  - Auxiliary temperature sensors that improve air curtain control and increase energy savings.
  - Clever PRO intelligent control (automatic, programmable, ModBus via PLC, timer, etc.) with an additional temperature sensor.

## Specifikationer

50Hz

Model	Uopvarmet	
	(m <sup>3</sup> /h)	(m)
FLY KSB 1000 A	2.3	
FLY KSB 1500 A	2.3	
FLY KSB 2000 A	2.3	
FLY KSB 2500 A	2.3	
FLY KSB 3000 A	2.3	

Dimensioner



L	A	B
1000	920	-
1500	1420	710
2000	1920	960
2500	2420	1210
3000	2920	1460

